

# 2780-B 2880-C

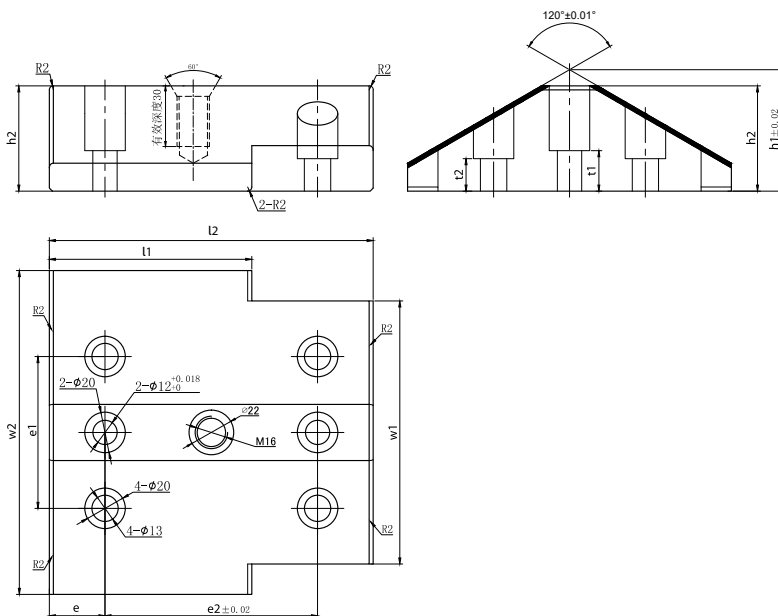
## Compound type, wedge type V self-lubricating guide plate 复合型，斜楔 V 型自润滑导板



2780-B



2880-C



**Material: 材料:**

2780-B: 钢烧结铜合金 + 固体润滑剂 (弥散型) Steel sintered copper alloy + solid lubricant (dispersion type)

2880-C: 钢烧结铁镍合金 + 固体润滑剂 (弥散型) Steel sintered iron-nickel alloy + solid lubricant (dispersion type)

2780-B./2880-C Compound type, wedge type V self-lubricating guide plate

2780-B./2880-C 复合型，斜楔 V 型自润滑导板

e1	e	w1	w2	e2	l1	l2	h1	h2	t1	t2
75	27.5	130	160	105	100	160	60	52	20	16
60	30	95	120	105	100	165	50	44	25	11



Order 订购

Catalog No. 目录号

2780  
2880

w2

120  
120

l2

165  
165

h2

044  
044

材质

B  
C